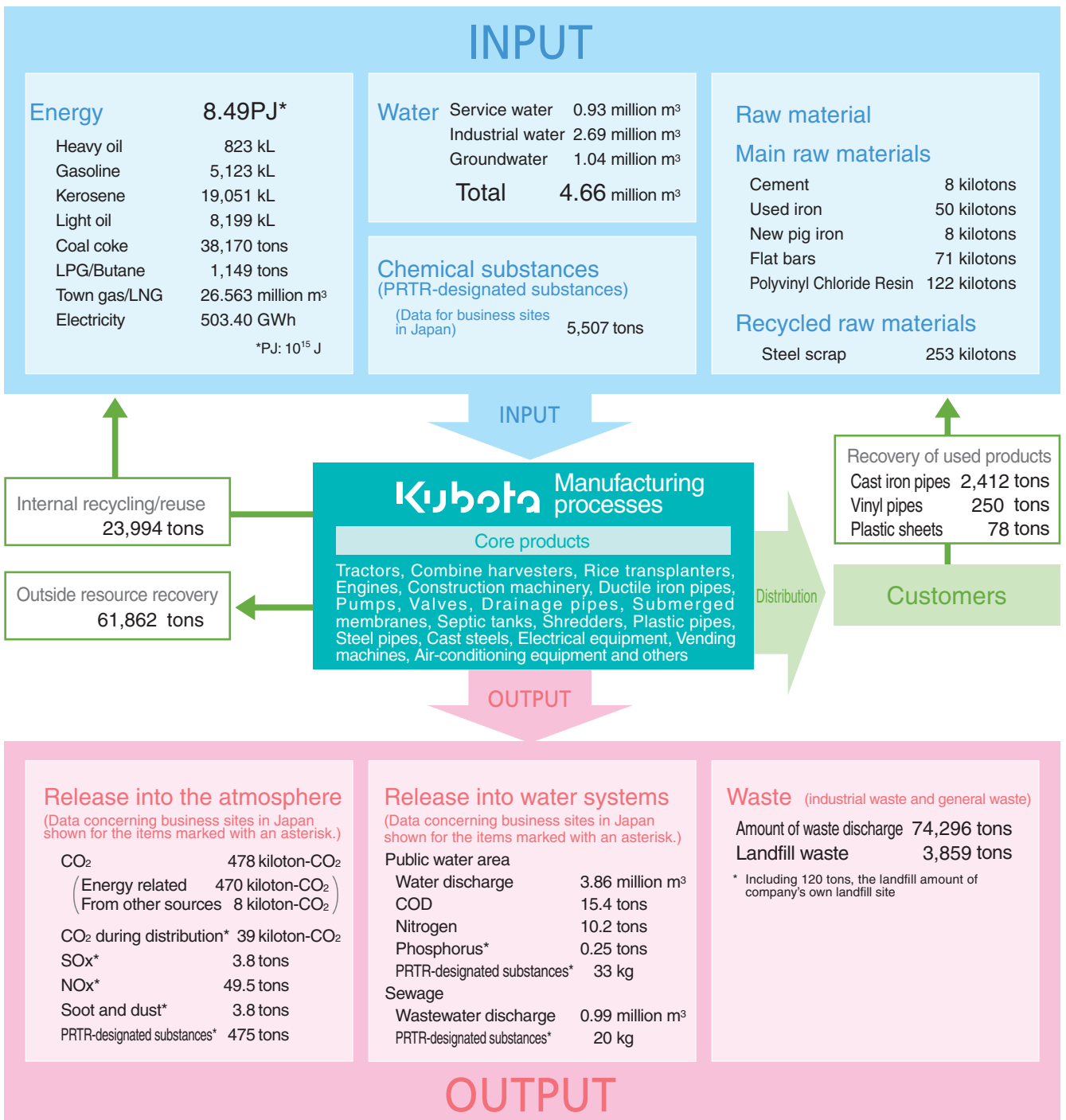


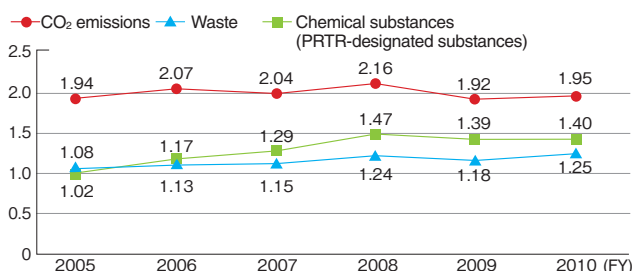
KUBOTA Group Business Activities and Environmental Loads

The numerical data and an overview of the environmental load resulting from the KUBOTA Group's corporate activities both in Japan and abroad are shown below. We remain committed to further reducing the environmental load and improving our eco-efficiency by collecting and analyzing accurate data on the environmental load.



(Starting from FY2010, data for "Release into water systems" includes that of overseas business sites, excluding the items marked with an asterisk.)

Eco-efficiency indicator



Eco-efficiency, which quantifies CO₂ emissions and waste discharge as an environmental burden, slightly improved from the previous year's level due to a reduction in both CO₂ emissions and waste discharge, while eco-efficiency in terms of the amount of PRTR-designated substances released and transferred remained unchanged from the previous year.

*Eco-efficiency indicator for CO₂=Consolidated net sales (million yen)/CO₂ emissions (t-CO₂) (KUBOTA Group)

*Eco-efficiency indicator for waste=Consolidated net sales (million yen)/Waste discharge (100 kg) (FY2005–FY2006: KUBOTA Group in Japan; during and after FY2007: Entire KUBOTA Group)

*Eco-efficiency indicator for chemical substances=Consolidated net sales (million yen)/PRTR-designated substance release and transfer (kg) (KUBOTA Group in Japan)