

SIAM KUBOTA Corporation (Navanakorn)

1. Outline

Address	101/19-24 Moo 20, Khlongnueng, Khlongluang, Pathumthani
Number of employees	1,318 (Dec, 2020)
Site area	80,000 m ²
Establishment day*	Aug/2010
ISO14001 certification date	Feb/2003 (recertificated Feb/2020)
Site overview	Diesel Engine, Power Tiller & PEM Manufacturing and sales of tractors, combines harvesters, horizontal diesel engines and power tillers, and sales of construction machinery

*Date of merger between The Siam Kubota Industry Co., Ltd. and Siam Kubota Tractor Co., Ltd.



2. Products

Main products



Diesel Engine



Power Tiller

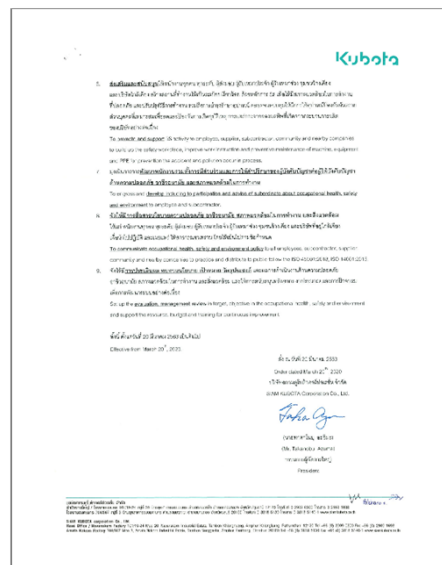
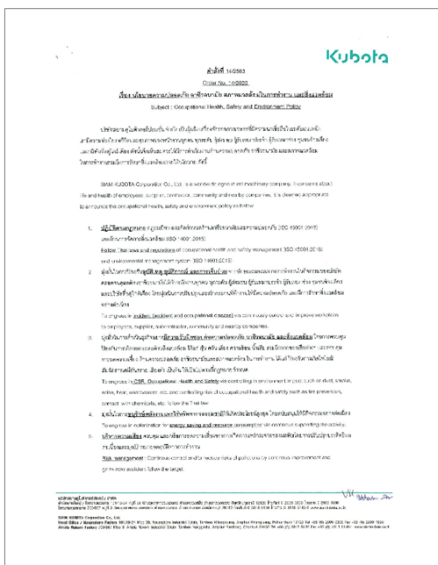


PEM

3. Environmental policy

1. Follow the Thai laws and regulations of occupational health and safety management (ISO 45001:2018) and environmental management system (ISO 14001:2015).
2. To engross in incident (accident and occupational disease) via continuously control and improve workplace to employees, supplier, contractor, community and nearby companies.
3. To engross in CSR, Occupational Health and Safety via controlling in environment impact such as dust, smoke, noise, heat, wastewater, etc. and controlling risk of occupational health and safety such as fire prevention, contact with chemicals, etc. follow the Thai law.
4. To engross in optimization for energy saving and resource consumption via continuous supporting the activity.
5. Risk management : Continuous control and/or reduce risks of pollutions by continuous improvement and go to zero accident follow the target
6. To promote and support 5S activity to employee, supplier, subcontractor, community and nearby companies to build up the safety workplace, improve work instruction and preventive maintenance of machine, equipment and PPE for prevention the accident and pollution occur in process.
7. To engross and develop including tp participation and advise of subordinate about occupational health, safety and environment to employee and subcontractor.
8. To communicate occupational health, safety and environment policy to all employees, subcontractor, supplier, community and nearby companies to practice and distribute to public follow the ISO 45001:2018, ISO 14001:2015.
9. Set up the evaluation, management review in target, objective in the occupational health, safety and environment and support the resource, budget and training for continuous improvement.

Environmental policy



SIAM KUBOTA Corporation (Navanakorn)

4.Environmental performance data (Jan. 2020 to Dec. 2020)

Used amount of energy	Crude oil equivalent KL	1,158
Used amount of water	thousand m ³	25

CO₂ emission*	tons CO ₂ e	2,209
---------------------------------	------------------------	-------

*CO₂ emissions from energy sources.

Air Pollutant measurement results				
Main smoke and soot generation facilities		QA Test Run		
	Unit	Control content	Control value	Maximum measured
SOx	ppm	Concentration control	475	<1
NOx	ppm	Concentration control	100	3.9
Particulate	mg/m ³	Concentration control	120	4.2

Amount of discharge water	thousand m ³	20	
Amount of pollutant in discharge water	COD	ton / year	2.5
	Nitrogen	ton / year	0.3
	Phosphorus	ton / year	-

Water pollutant measurement results				
		unit	Control value	Maximum measured
Public water areas	pH	-	6.0 ~ 9.0	8.7
	BOD	mg/L	20	8
	COD	mg/L	120	50
	Nitrogen	mg/L	100	6
	Phosphorus	mg/L	-	-
	Hexavalent chromium	mg/L	-	-
	Lead	mg/L	-	-
	COD, total emission control	kg/day	-	-
	Nitrogen, total emission control	kg/day	-	-
Sewerage lines	Phosphorus, total emission control	kg/day	-	-
	pH	-	6.0 ~ 9.0	8.7
	BOD	mg/L	450	170
	COD	mg/L	600	289
	SS	mg/L	500	206

Waste discharge	tons	93
Recycling ratio	%	100%

VOC emission	tons	12
---------------------	------	----

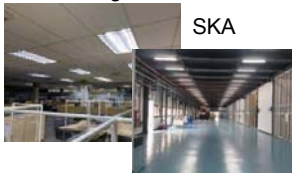
SIAM KUBOTA Corporation (Navanakorn)

5.Environmental Topics

5.1 Energy Consumption Reducing Activity

1) Turn Off Energy Office after working time (20.30)

Building1



SKA

Energy saving 30,475 Kwh/year
TON CO2 reducing 14.4 TON

2) Reduce Time to turn on oven @ Paint 1 (from 7.5 hr to 5 hr)



Energy saving 4,684 m3/year
TON CO2 reducing 8.9 TON

Time (Before)	Time (After)
8.00-12.00	8.30-9.40
12.30-17.00	10.10-11.40
	13.00-14.40
	15.00-16.40

3) Turn Off Energy Stop of M/C on break time



Energy saving 25,440 Kwh/year
TON CO2 reducing 12 TON

4) Skylight Changing at Gear Shaft (reduce lamp 176 units)



Energy saving 4,869 Kwh/year
TON CO2 reducing 2.3 TON

Before

After

5) Turn Off lighting of WH (non-routine working area)



Energy saving 2,556 Kwh/year
TON CO2 reducing 1.2 TON

Before

After

5.2 Water Consumption Reducing Activity

1) Adjust the water level at WC from 6L to 4.9 L

Before

After



Water saving 1,700 m3/year

Cost Saving 34000 THB/Year

2) Saving Water Consumption by install auto watering

Before

After



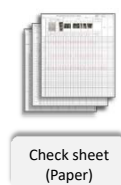
Water saving 1,707 m3/year

Cost Saving 34140 THB/Year

5.3 Other Activities of Environment

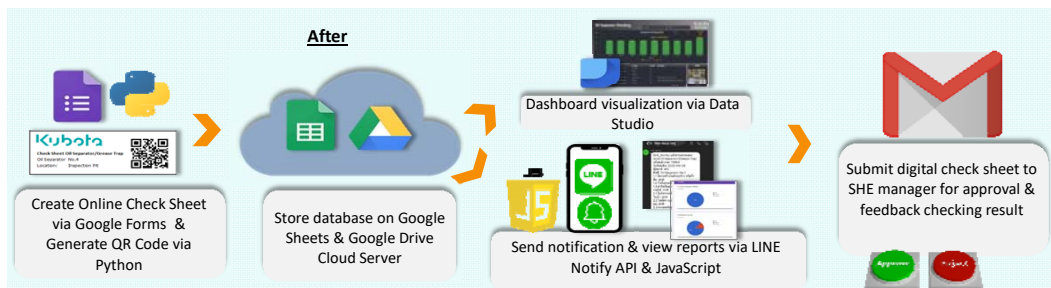
1) Digital Check Sheet Transformation & Automation

Before



Check sheet (Paper)

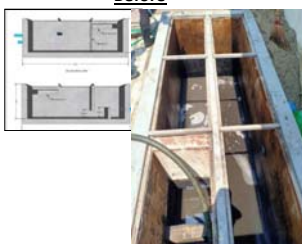
After



2) Improvement Oil Separator No.4 to prevent oil leak to public source

Before

After



1) Change Type of SKCN bin to reduce wrong separated waste. it can increase recycle waste 1,374 kg/year

Before

After

