

Kubota Manufacturing of America Corporation

1.Outline

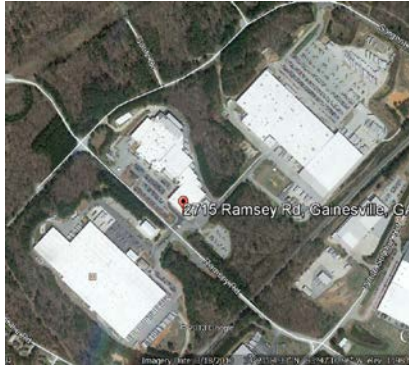
Address 2715 Ramsey Road
Gainesville, GA 30501 USA

Number of employees 1463

Site area 99,714 m²

Establishment day Sep-1988

ISO14001 certification date 20-Sep-2012



3.Environmental policy

Kubota is committed to preserving the environment. Our goal is to reduce our environmental impact by prevention of pollution resulting in clean safe communities, while producing products that meet or exceed our customers' expectations. Kubota is committed to continual improvement by implementing an environmental management system that fulfills our goal.

4.Environmental performance data (Jan. 2015 to Dec. 2015)

Used amount of energy	Crude oil equivalent KL	11,309
Used amount of water	thousand m ³	73
CO₂ emission*	t -CO ₂	25,322

*CO2 emissions from energy sources.

Air Pollutant measurement results				
Main smoke and soot generation facilities		Boilers		
	Unit	Control content	Control value	Maximum measured
SOx	Total emission control and K-value control: m ³ N/h	Use of town gas with zero sulfur content		
NOx	Total emission control: m ³ N/h, Concentration control: ppm	Concentration control	-	NA
Particulate	Concentration control: g/m ³ N	Concentration control	-	NA

Amount of discharge water -Industrial use	thousand m ³ /year	50	
Amount of pollutant in discharge water	COD	kg/year	NA (not tested)
	Nitrogen	kg/year	188
	Phosphorus	kg/year	14

Water pollutant measurement results				
		unit	Control value	Maximum measured
Public water areas	pH	-	-	-
	BOD	mg/L	-	-
	COD	mg/L	-	-
	Nitrogen	mg/L	-	-
	Phosphorus	mg/L	-	-
	Hexavalent chromium	mg/L	-	-
	Lead	mg/L	-	-
	COD, total emission control	kg/day	-	-
	Nitrogen, total emission control	kg/day	-	-
	Phosphorus, total emission control	kg/day	-	-
Sewerage lines	pH	-	6.0 ~ 9.5	8.5
	BOD	mg/L	900	86
	COD	mg/L	-	NA
	SS	mg/L	900	53

Waste discharge	t /year	3,608
Recycling ratio	%	94.1%

2.Products

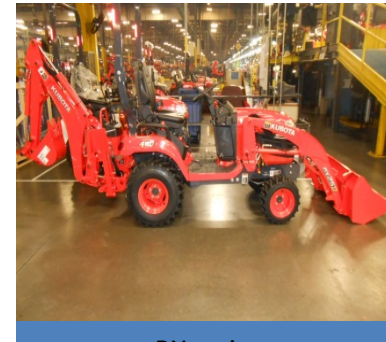
Main products



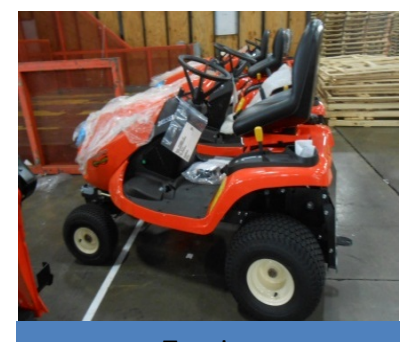
RTV series



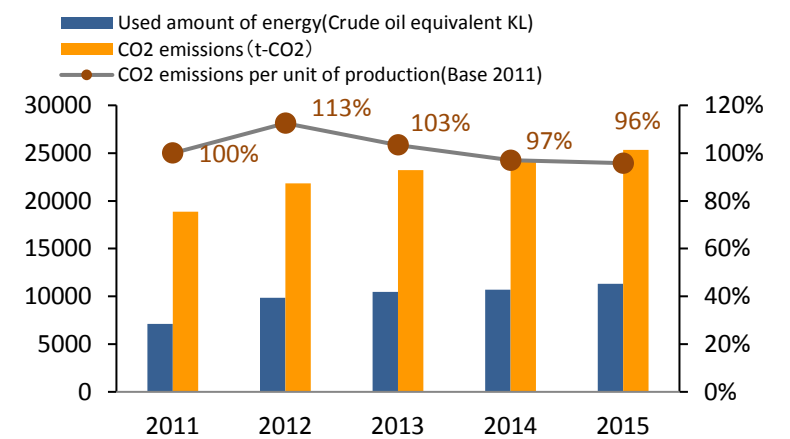
Z series



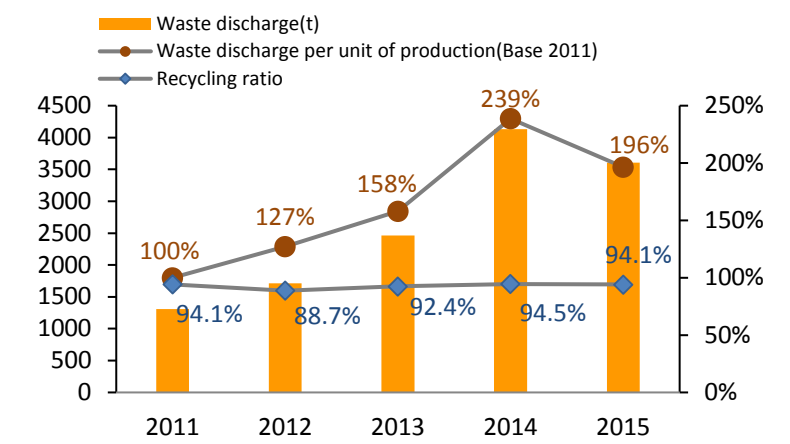
BX series



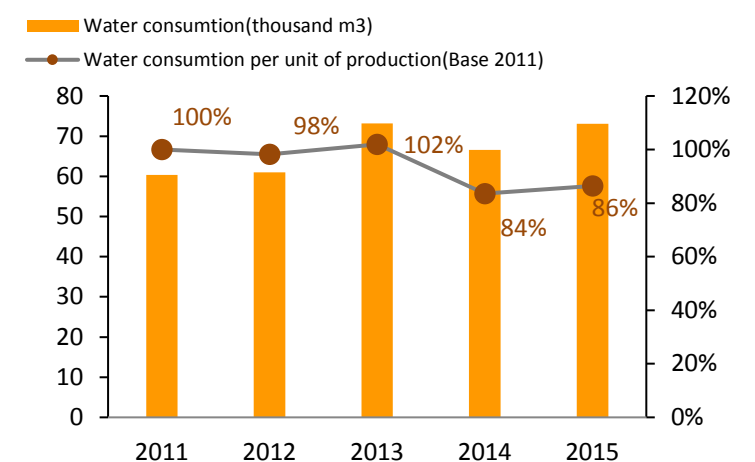
T series



Graph.1 Energy & CO₂ emissions



Graph.2 Waste discharge & Recycling ratio



Graph.3 Water consumption

5.Environmental Communication

Environmental Bulletin Board posted in each building which includes environmental policy, trash - recycling - electrical usage per unit - natural gas usage per unit - water per unit - sewer per unit, KMA also supports; Goodwill Industries Youth program in concert with Wood Mills High School in Gainesville GA by providing 12 week student internships teaching students manufacturing and office skills, Eagle Ranch by providing mowers to the facility at no cost as well as providing lawn care of the large areas of grass and pastures of their property, Supports LifeSouth by holding two blood drive each year and Supports North Georgia Mountain Food Bank (Goodwill Industries) and a clothing drive annually.

